

w/b 5988

D 14781

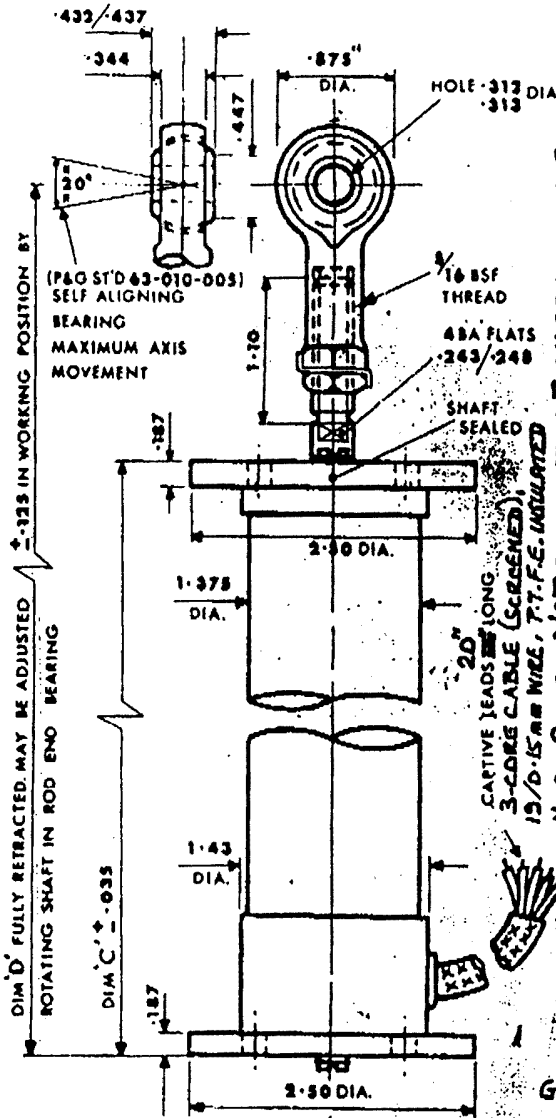
PENNY & GILES LTD. MUDEFORD. CHRISTCHURCH. HANTS.

UNIT IDENTIFICATION./ORDER AS:- LP 21B/85/F. - 12" MECH. S/L. D14781

USED ON
L16155
AR 14781

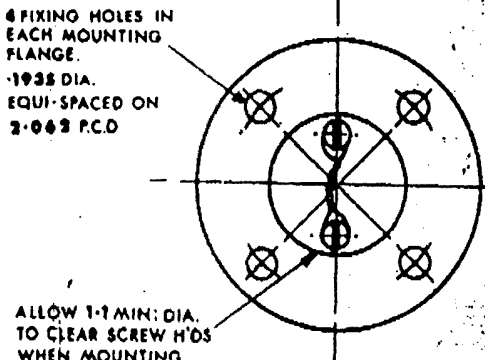
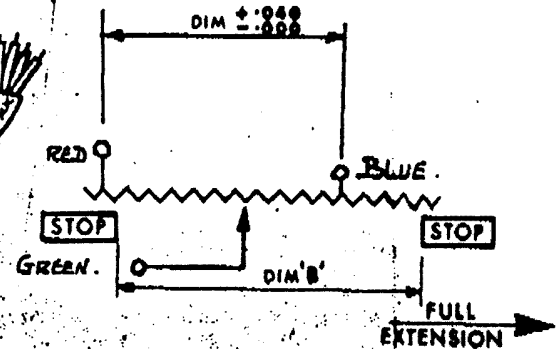
C.C.
SALES.
Q.C.
by:-
J

LPM
107



SPECIFICATION DATA

STROKE (INCHES)	10.63" (270mm) ELECT.
TEMP. RANGE	-50°C. TO +85°C.
POWER RATING	10W Volts MAX.
RESISTANCE Ω ± 5%	2kΩ
RESOLUTION TURNS	



CUSTOMERS COPY

ELECTRICAL STROKE LENGTH 'A'	7	8	9	10.08	10.63	14.08	16.08	18.08	20.08	22.08	24.08	28.08	36.08
MECHANICAL STROKE LENGTH 'B'	7.2	8.2	9.2	10	12	14	16	18	20	22	24	30	36
DIMENSION 'C'	11.0	12.0	13.0	13.83	16.33	18.33	21.33	23.33	26.33	28.33	31.33	38.33	46.33
DIMENSION 'D'	13.1	14.1	15.1	5.9	18.4	20.9	23.4	25.9	28.4	30.9	33.4	40.9	48.9
APPROX. WEIGHT IN OUNCES	14	18	20	24	28	32	36	40	44	48	62	64	76

ISSUE	DATE	CHANGES
-------	------	---------

1 16.2.77 NEW DRWG. (CHI/5390)

APPROVED: S.C. EXTERNAL FINISH:- ANODIC (NATURAL) DEF. 151. DIMENSIONS IN INCHES NOT SCALE

DRAWN: W.N. CLARK RECTILINEAR POTENTIOMETER MODEL LP 21/85/F D 14781