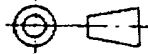


DRAWING NUMBER
D41775

THIRD ANGLE
PROJECTION
TO B.S. 308

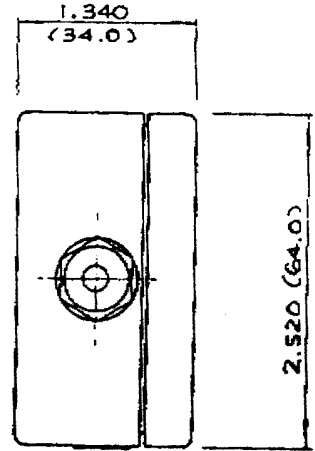


FOR GENERAL TOLERANCES & FINISHES
SEE PENNY & GILES STANDARD 55-301. FOR
GEOMETRIC TOLERANCES SEE B.S. 308 P13.

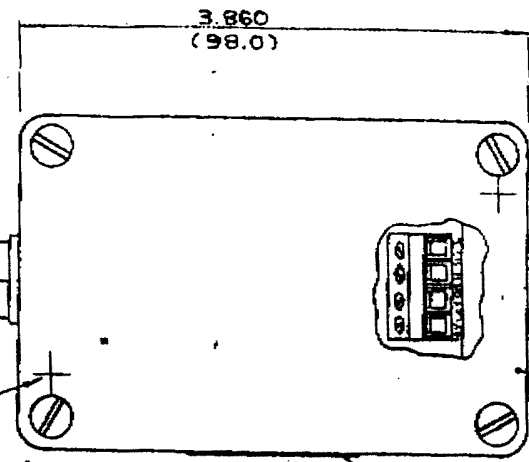
APPROX. GRID REF. HOLE REF. No. OF HOLES

HOLE DATA
DESCRIPTION

IN DOUBT ASK



800 REF (20.0)



WALL MOUNTING
FIXING CENTRES FOR
M4 CH'H'D SCREWS 3.386 (86.0)
X 1.417 (36.0).

ENVIRONMENTAL PROTECTED (IP65)
DIE-CAST ALUMINIUM HOUSING FINISHED
IN RAL 7000 BLUE-GREY STOVE ENAMEL PAINT

LABEL ON THIS FACE

SPECIFICATIONS @ 24 V dc

SUPPLY VOLTAGE _____ 20-30 Vdc
 SUPPLY CURRENT _____ 100 mA MAX
 SUPPLY PROTECTION _____ RIPPLE _____ 15% INPUT
 _____ TRANSIENTS _____ 160V @ 5µs
 _____ REVERSE POLARITY _____ INDEFINITE
 OUTPUT SIGNAL CURRENT _____ 0-20 mA, 0-10 mA
 _____ OR 4-20 mA (SELECTED BY CUSTOMER)
 LOAD RANGE _____ 20 mA MAX 0-750Ω
 _____ 10 mA MAX 0-1500Ω

WIRING CONNECTIONS

SUPPLY/OUTPUT
 CUSTOMER CONNECTIONS TO APPROPRIATE TERMINALS
 _____ SUPPLY 24 V dc
 _____ SUPPLY 0 V dc
 _____ OUTPUT +ve
 _____ OUTPUT -ve

LVDT
 RED _____ 10 V
 BLACK _____ 0 V
 BLUE _____ HIGH (H)
 YELLOW _____ LOW (L)

INTERCHANGEABILITY

THE VOLTAGE TO CURRENT
 CONVERTER MUST BE SET TO
 EACH LVDT. IF USED WITH ANY
 OTHER LVDT IT MUST BE RE-
 CALIBRATED.
 ALSO, IF SET FOR MAXIMUM
 OUTPUT WITH PROBE EXTEN-
 DED IT MUST BE RE-
 CALIBRATED IF USED FOR
 MAXIMUM OUTPUT WITH PROBE
 DEPRESSED.

ABOVE CONNECTIONS GIVE MAXIMUM CURRENT
 OUTPUT WITH LVDT PROBE EXTENDED. TO OBTAIN
 MAXIMUM CURRENT OUTPUT WITH PROBE DEPRESSED
 EXCHANGE BLUE & YELLOW WIRES.

TEMPERATURE RANGE _____ -20°C TO +60°C
 TEMPERATURE COEFFICIENT _____ TYPICALLY ±.008%/°C
 INFLUENCE OF SUPPLY VOLTAGE VARIATIONS _____ .01%/°C

NOTE:- OVERALL LINEARITY _____ LIN. OF LVDT + LIN. OF CONVERTER.

D or CAT.No
+
M.A. or S.A.
DIS. or M.R.I.
+
D.O. REFS.
SUB-MASTER FROM:-
APPROVED

| | | | | | | | | | | | | | | | | | | | | |
|------------|----------|------------------------------|------------------|---------|-------------|----------------|--|--|--|--|--|--|--|--|--|--|--|--|--|--|
| MATERIAL:- | FINISH:- | TOLERANCES ±.010 (.25) | SCALE: FULL SIZE | ISSUE 1 | DATE 2.7.85 | CHANGE RE. DEN | | | | | | | | | | | | | | |
|------------|----------|------------------------------|------------------|---------|-------------|----------------|--|--|--|--|--|--|--|--|--|--|--|--|--|--|

DRAWN L.N. Rhodes
 Penny & Giles Christchurch, Dorset. U.K.

TITLE: VOLTAGE TO CURRENT
 CONVERTER FOR LVDT'S

SIZE A3
 DRAWING NUMBER
D41775