

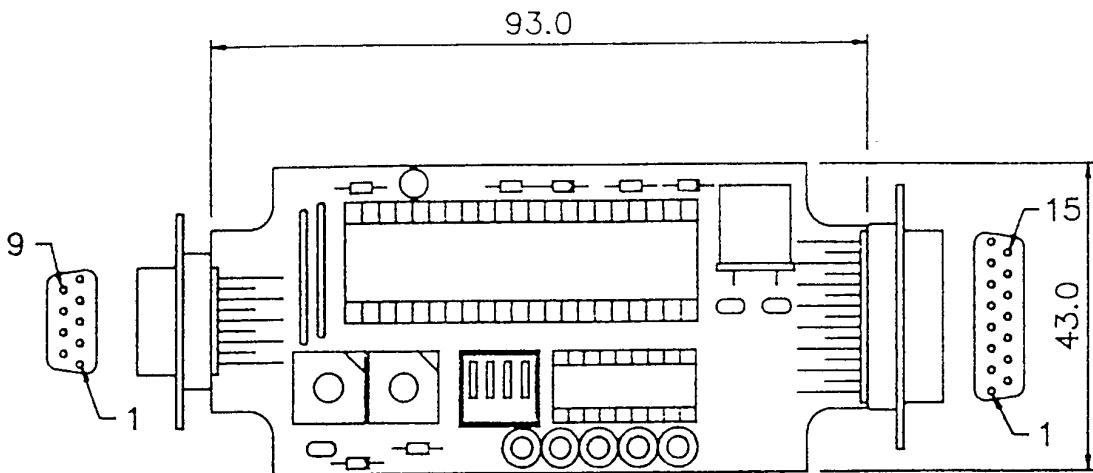
DRAWING NUMBER
D48102

3rd ANGLE PROJECTION

USED ON

D or
CAT No

M.A/S.A



Specification

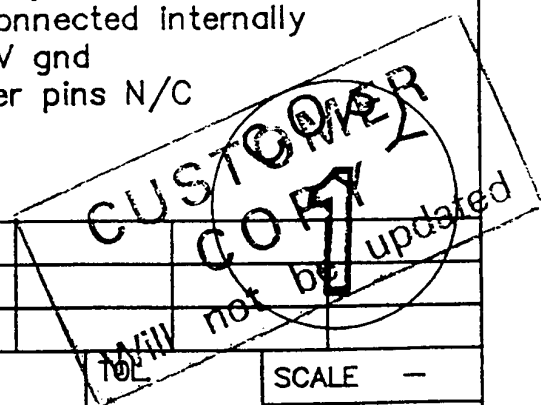
Connector ~ 9 way 'D' type socket
& 15 way 'D' type plug.

Supply ~ +5V \pm 5% @ 150mA max.

Output ~ RS232 levels, format 22
(microsoft), baud 1200.

Connection Details

9 way conn		15 way conn	
Pin	Description	Pin	Description
1	+5V	3	+5V
2	X Channel A	4	Tx
3	X Channel B	6	Rx
4	Y Channel B	10	Busy
5	Y Channel A	12	Connected Internally
6	Switch 1	13	0V gnd
7	Switch 2	All other pins N/C	
8	Switch 3		
9	0V gnd		



ISSUE	1				
DATE	10.10.91				
CHANGE	CH230				
MATERIAL	-	FINISH	-	SCALE	-
APP				DIMS	mm

PENNY + GILES

Penny & Giles
Computer Products LTD
Christchurch Dorset.
Tel (0202) 481751

DRAWN R.HARNETT	TITLE INT1 RS232 CARD ONLY	SIZE A4	DRAWING NUMBER D48102
--------------------	----------------------------------	------------	--------------------------