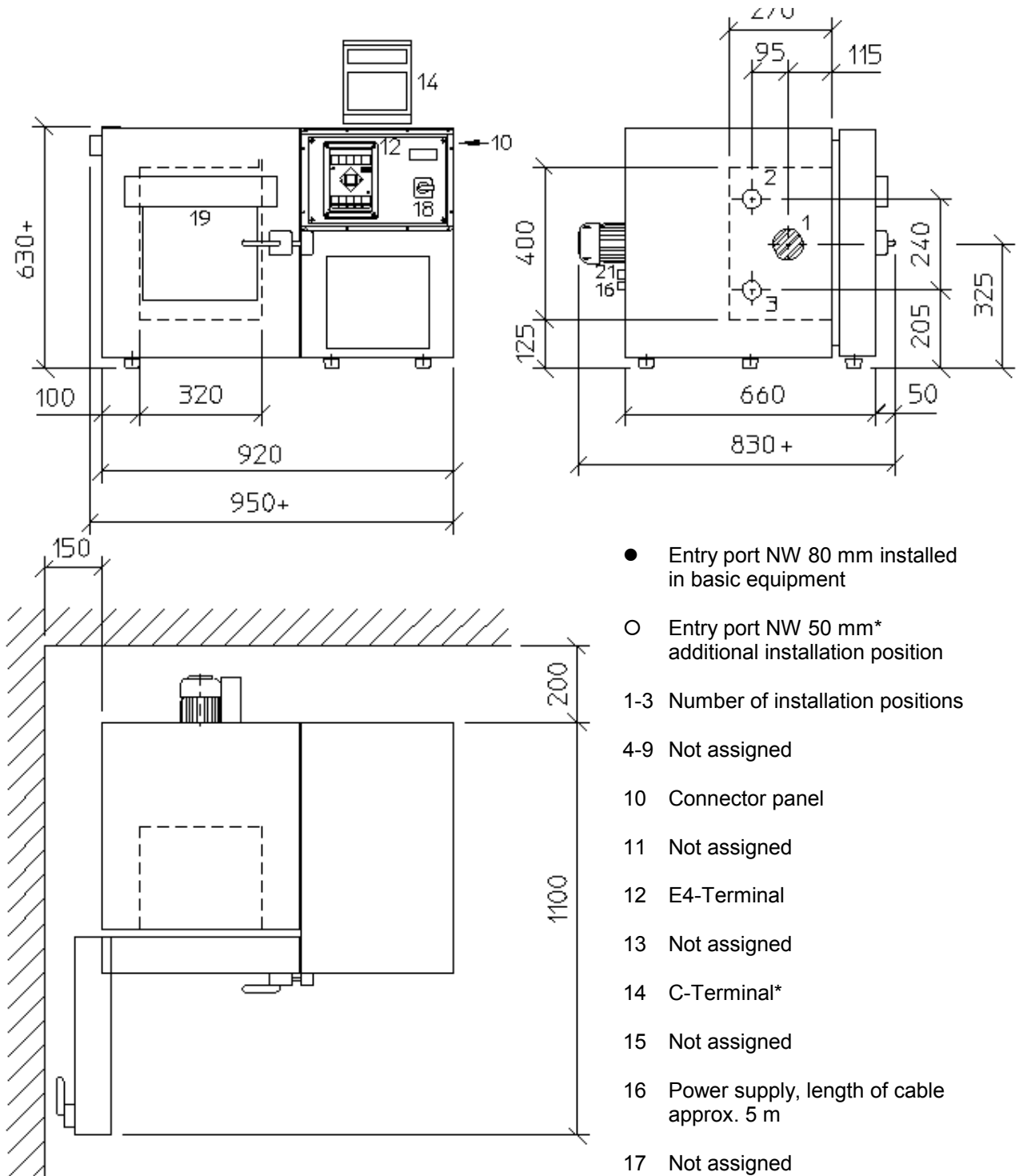


Layout VT 4004



- Entry port NW 80 mm installed in basic equipment
- Entry port NW 50 mm* additional installation position
- 1-3 Number of installation positions
- 4-9 Not assigned
- 10 Connector panel
- 11 Not assigned
- 12 E4-Terminal
- 13 Not assigned
- 14 C-Terminal*
- 15 Not assigned
- 16 Power supply, length of cable approx. 5 m
- 17 Not assigned
- 18 Main switch and adjustable operating temperature limiter*
- 19 Door with window

+ For narrow entry openings components (e.g. hinges) may be screwed off to minimize width.

*optional accessory