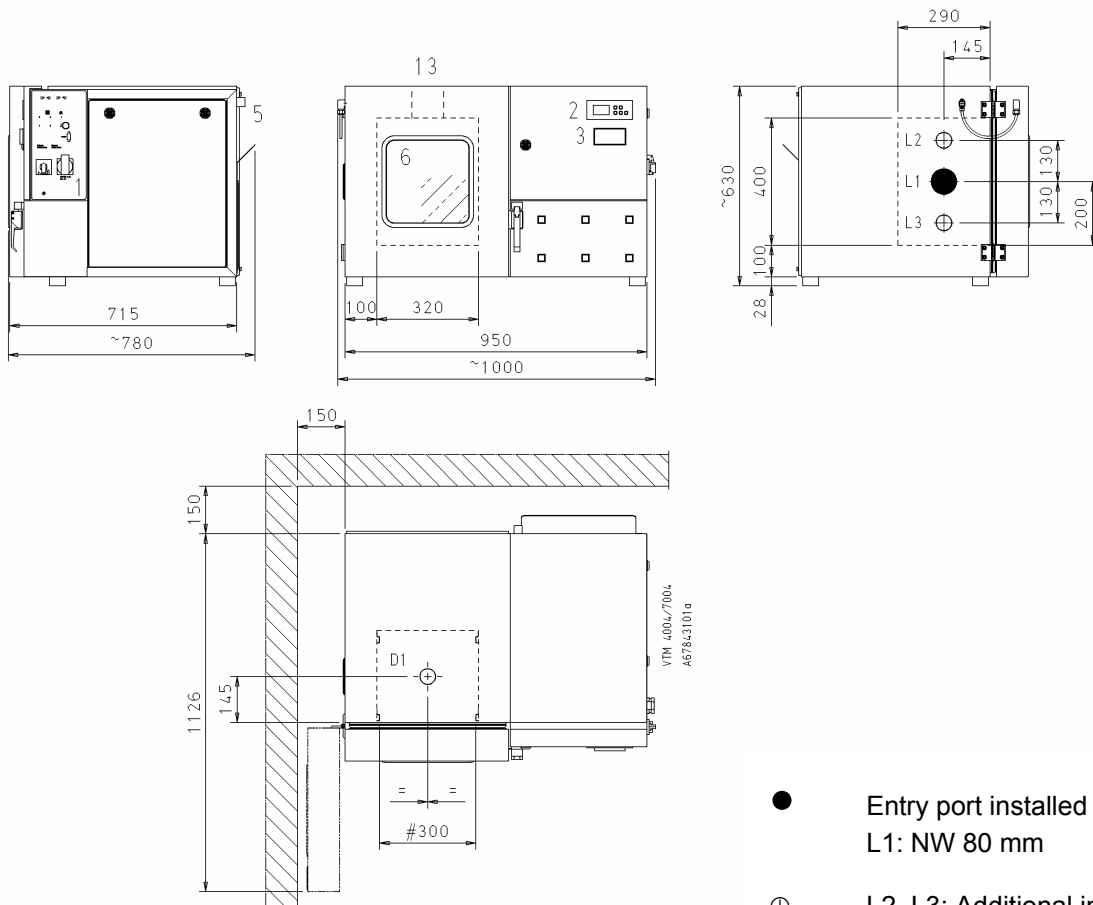


## Layout VTM 4004 + 7004



- Entry port installed in basic version  
L1: NW 80 mm
- ⊕ L2, L3: Additional installation positions, NW 50 mm I.h. side (option)
- D1 Installation position in the ceiling (option)
- 1 Main switch panel
- 2 Operating panel Mincontrol
- 3 Independent adjustable temperature limiter  $t_{\min}/t_{\max}$
- 4 Not assigned
- 5 Electrical connection, cable length approx. 5 m
- 6 Door with window (option)
- 13 Lead-through pad (option)
- # Useful width